



CHAMPION SECURITY SYSTEM



EXPLORING OUR CCTV SERVICE EXPERTISE



ABOUT OUR COMPANY



Mumbai

At Champion Security System, we are committed to delivering excellence and value to our clients, enabling them to thrive in an increasingly automated and data-centric world. Partner with us to unlock the full potential of your operations and secure a competitive edge in the market



CCTV & SECURITY SURVEILLANCE

We integrate advanced technologies into our CCTV solutions to enhance functionality and sustainability



VIDEO MANAGEMENT SOLUTIONS

Our VMS supports virtually any IP camera, offering integration with a broad spectrum of makes and models, including those compliant with ONVIF standards.



OCCUPANCY SENSOR

Our advanced sensor products deliver precision, reliability, and seamless integration for modern automation needs

**CONTACT US NOW
FOR MORE INFORMATION**



<https://championsecuritysystem.com/>



About us

Champion Security System is at the forefront of Information Technology, Security, and Safety solutions, offering a diverse range of products and services. In today's algorithm-driven enterprise landscape, we harness the power of data to elevate employee productivity, optimize supply chains, and enhance customer experiences through innovative solution design.

Our expert team collaborates closely with clients to develop tailored strategies and roadmaps, guiding them from initial discovery through to the implementation of world-class solutions. We understand the importance of efficiency and cost-effectiveness, which is why we also provide managed solutions designed to save our clients both time and money.

Our comprehensive offerings include:

IT Solutions: Cutting-edge technology solutions to support organizational goals.

Security Solutions: Advanced security systems for robust protection and risk management.

Safety Solutions: Ensuring safety protocols and systems are integrated seamlessly.

At Champion Security System, we are committed to delivering excellence and value to our clients, enabling them to thrive in an increasingly automated and data-centric world. Partner with us to unlock the full potential of your operations and secure a competitive edge in the market.



Mission

At Champion Security System, our mission is centered around exceeding the expectations of our esteemed clients through unwavering commitment and dedication. We firmly believe in the principles of hard work and perseverance as the cornerstone of our success, rejecting any notion of shortcuts. Our ultimate goal is to emerge as leaders in a competitive industry by leveraging a robust foundation built on several key pillars.

First and foremost, our team of professionals forms the backbone of our organization, driving our passion for excellence in every endeavor. We pride ourselves on offering a flawless range of products that excel in both utility and functionality, ensuring our solutions meet and exceed the diverse needs of our clientele.

In a world where security concerns loom large, we prioritize prevention over cure, securing homes and businesses to provide peace of mind. Recognizing that each client has unique requirements, our products are renowned for their precision and reliability. Our customer-centric approach ensures that we deliver solutions that are not only in-demand but also completed promptly and efficiently.

Moreover, we are committed to providing exceptional value for our clients' investments through revolutionary products that redefine security standards. At Champion Security System, we are dedicated to continuous improvement and innovation, striving to reach new heights of success while maintaining the highest standards of service and quality.

In summary, our mission is clear: to lead through excellence, dedication, and innovation, ensuring the security and satisfaction of our valued clients at every step of the way.



Our Surveillance Products

1. CCTV Cameras

Dome Cameras (Indoor)

Bullet Cameras (Outdoor)

PTZ Cameras (Pan-Tilt-Zoom)

IP Cameras (Network connected, high-res)

Analog Cameras (Older systems, coaxial cables)

Thermal Imaging Cameras

License Plate Recognition (LPR) Cameras

2. Recording & Monitoring Equipment

Network Video Recorders (NVRs)

Digital Video Recorders (DVRs)

Hybrid Video Recorders (HVRs)

Cloud-Based Video Storage

Video Management Systems (VMS)

3. Accessories

Cables (Coaxial, Ethernet)

Power Supply Units (PSUs)

Mounting Brackets & Housings

PoE Switches (for IP cameras)

Storage Devices (HDDs, SSDs for NVRs)

4. Advanced Surveillance Gear

AI-Powered Cameras (with facial recognition, object detection)

Drones for Surveillance

Body-Worn Cameras

Hidden/Spy Cameras



Security Surveillance Services

1. Installation Services

Site assessment & design
Camera installation & wiring
System configuration & testing

2. Monitoring Services

24/7 Remote Video Surveillance
Real-Time Alerts & Notifications
Virtual Guard Tours

3. Maintenance & Support

Regular maintenance contracts
Emergency repair services
System upgrades & firmware updates

4. Cloud & Remote Services

Cloud video storage & access
Mobile app integration
Remote system access via web portal

5. Security Consulting

Risk assessment
Surveillance system planning
Compliance with local laws & standards (e.g. GDPR, HIPAA, etc.)

6. Integration with Other Systems

Alarm Systems (intrusion detection)
Access Control Systems (key cards, biometrics)
Fire Detection Systems
Smart Home/Building Integration



Vision

At Champion Security System, we are committed to helping our clients achieve optimum resource utilization while leveraging CCTV and technology to contribute positively to making the world a better place to live. Here's how we approach this mission:

Efficient Use of Resources: We design and implement CCTV solutions that are not only effective in enhancing security but also efficient in their resource utilization. This includes recommending energy-efficient cameras, optimizing storage and bandwidth usage, and minimizing environmental impact during installation and operation.

Smart Technology Integration: We integrate advanced technologies into our CCTV solutions to enhance functionality and sustainability. This may include AI-powered analytics for proactive security monitoring, remote management capabilities to reduce travel emissions, and cloud-based storage solutions that are energy-efficient.

Environmental Responsibility: We prioritize environmentally friendly practices in our CCTV installations and operations. This includes using eco-friendly materials, ensuring proper disposal of electronic waste, and promoting energy-saving features in our technology solutions.

Promoting Safety and Security: By deploying robust CCTV systems, we contribute to creating safer and more secure environments for communities and businesses. This not only enhances public safety but also supports sustainable urban development by deterring crime and improving incident response times.

Education and Awareness: We educate our clients about the benefits of sustainable CCTV solutions and technologies. This may involve training on energy-saving features, best practices for system optimization, and the importance of responsible technology use.

Innovation and Adaptation: We continuously innovate our CCTV offerings to align with the latest advancements in technology and sustainability. This includes exploring renewable energy options for powering surveillance systems, integrating sensors for environmental monitoring, and enhancing data security measures.

By focusing on optimizing resource utilization, promoting sustainable technology solutions, and enhancing safety and security through CCTV systems, Champion Security System strives to contribute positively to society and the environment. Together with our clients, we aim to create a safer, more sustainable world for future generations.





Management

Champion Security System began its journey in 2008 as a proprietorship company and later, in 2018, transitioned to a Sole Proprietor firm registered under GST. Over the past decade, Champion Security System has earned the trust of its clients through dedicated service and commitment to excellence. Managed by a team of highly skilled technical staff, the company operates with a focus on Information Technology and project delivery, leveraging rich industry experience.

Throughout its tenure, Champion Security System has successfully executed numerous projects and provided expert consultation in the field. The company is known for adopting modern techniques and innovative solutions to meet customer needs effectively. Continual learning and adaptation to new technologies are core values, ensuring that clients receive the latest and most advanced solutions available. As Champion Security System continues to grow and evolve, its dedication to quality service, technological advancement, and client satisfaction remains steadfast. The team's expertise and proactive approach position the company as a trusted partner in providing cutting-edge security solutions and IT services.





Surveillance Security Solutions

Security is paramount for all organizations and institutions, and at Champion Security System, we specialize in providing a comprehensive range of surveillance security solutions sourced from industry leaders. Our solutions are designed to bring intelligence to both residential and commercial environments, ensuring peace of mind and proactive security measures.

Key Features of our Surveillance Security Solutions:

Intelligent Software Integration: Our solutions are powered by advanced software at the backend, enabling sophisticated analytics to monitor and analyse workplaces and buildings effectively. This intelligence helps in detecting potential security threats and anomalies in real-time.

Enhanced Security Enforcement: We deploy state-of-the-art surveillance technologies that contribute significantly to enhancing security measures and preventing potential disasters. From CCTV cameras to advanced monitoring systems, we ensure comprehensive coverage and monitoring capabilities.

Real-time Alerts and Monitoring: Automatic alerts can be configured to notify security personnel or designated authorities instantly in case of suspicious activities or emergencies. This proactive approach ensures swift response times and mitigation of risks.

Activity Recording and Analysis: Our solutions enable continuous recording of activities, which can be reviewed and analysed later if needed for investigative or compliance purposes. This feature enhances accountability and provides valuable insights into operational efficiencies.

Customized Solutions: We understand that each organization has unique security requirements. Therefore, we offer tailored solutions that align with specific needs, whether it's for a small business, a large corporate office, educational institution, or residential complex.

Integration with Existing Systems: Our surveillance solutions are designed to seamlessly integrate with existing security systems and infrastructure, minimizing disruption and maximizing efficiency.

At Champion Security System, we are committed to providing robust surveillance security solutions that not only meet but exceed our clients' expectations. By leveraging cutting-edge technology and intelligent software, we empower organizations to proactively manage security risks and maintain a safe environment for employees, visitors, and residents alike.



We provide complete range of Surveillance Security Solutions for Home, Offices, Buildings and Campus. A stress free environment which imparts peace of mind.



The solution includes

Here is an expanded overview of the comprehensive security solutions offered by Champion Security System:

1. Designing & Implementation of Security Solution:

Champion Security System designs and implements customized security solutions tailored to the specific needs of clients. This includes assessing security risks, recommending appropriate technologies, and deploying systems that ensure comprehensive coverage and protection.

2. Video Wall Solution:

We provide advanced video wall solutions for centralized monitoring and management of multiple CCTV cameras and security feeds. This allows for real-time monitoring and quick response to incidents across large facilities or campuses.

3. Intrusion Detection & Intelligence:

Our systems include sophisticated intrusion detection technologies that utilize intelligent analytics to detect unauthorized entry attempts or suspicious activities. This ensures early detection and prevention of security breaches.

4. Vehicle Security:

Champion Security System offers solutions for monitoring and securing vehicles within premises or parking areas. This includes CCTV surveillance, vehicle tracking systems, and integration with access control for authorized vehicle entry.

5. Smart Locks for Authorized Door Access:

We provide smart lock solutions that enable secure and convenient access control to buildings, rooms, or restricted areas. Access can be managed remotely via mobile devices, enhancing security while allowing flexibility for authorized personnel.

6. Mobile Integration for Remote Monitoring:

Our solutions support mobile integration, enabling remote monitoring and management of security systems from smartphones or tablets. This ensures that security personnel can monitor premises and respond to incidents from anywhere.

7. Smart Analytics:

People Counting: Utilizes video analytics to count the number of people entering or exiting a specific area, aiding in crowd management and occupancy monitoring.

Thermal Imagery: Integrates thermal imaging technology for detecting heat signatures, useful for identifying potential threats or monitoring temperature variances.

Missing Detection: Uses video analytics to detect and alert security personnel if an object or person goes missing from a designated area.

Intrusion Detection: Advanced analytics detect unauthorized entry into secured zones, triggering immediate alerts and responses.

8. Alarm Solutions & Video Intercom:

We provide comprehensive alarm solutions for intrusion detection, fire alarms, and emergency alerts. Video intercom systems enhance communication and visitor management, allowing for secure verification and remote access control.

Champion Security System ensures that each solution is integrated seamlessly to provide a cohesive security infrastructure. Our commitment to utilizing cutting-edge technology and intelligent analytics enables proactive security management, ensuring the safety and protection of assets, personnel, and facilities.



Champion Security System offers a comprehensive range of advanced security solutions tailored to meet various needs and environments. Here's an overview of the products and systems we provide:

1. Dome Cameras & Bullet Cameras:

Dome Cameras: Ideal for indoor surveillance, these cameras offer discreet monitoring with a wide viewing angle and vandal-resistant features.

Bullet Cameras: Designed for outdoor use, these cameras are weather-proof and provide long-range viewing capabilities, making them suitable for perimeter security.

2. PTZ Industry Camera:

PTZ (Pan-Tilt-Zoom) cameras are versatile and can be remotely controlled to pan, tilt, and zoom for detailed monitoring of large areas or specific points of interest. They are commonly used in industrial settings for monitoring production processes and security.

3. Home Base System:

Our home base systems integrate various security components like cameras, sensors, and alarms to provide comprehensive protection for residential properties. They are designed for ease of use and can be monitored remotely via mobile devices.

4. DVR & NVR Systems:

DVR (Digital Video Recorder): Used with analog cameras, DVR systems record and store video footage locally.

NVR (Network Video Recorder): Compatible with IP cameras, NVR systems record and manage video footage over an IP network, offering greater flexibility and scalability.

5. Video Intercom & Biometric Door Access:

Video Intercom: Enables secure audio and video communication between entry points and inside premises, enhancing visitor management and access control.

Biometric Door Access: Utilizes fingerprint or facial recognition for secure and convenient access control, ensuring only authorized individuals can enter designated areas.

6. Remote Kits & Outdoor Stations:

Remote kits enable remote access and control of security systems, allowing monitoring and management from anywhere via mobile devices or computers.

Outdoor stations provide robust communication and access control solutions for external entry points, combining durability with advanced features like video intercom and access verification.

7. Alarm Solutions:

Our alarm solutions encompass intrusion detection, fire alarms, and emergency notifications, ensuring prompt response to security breaches or emergencies.

8. Video Wall & Pro Surveillance Systems:

Video Wall: Centralizes monitoring of multiple camera feeds for real-time situational awareness and effective management of security operations.

Pro Surveillance Systems: Comprehensive surveillance solutions tailored for professional environments, combining advanced cameras, recording systems, and analytics for enhanced security management.

At Champion Security System, we prioritize reliability, innovation, and customer satisfaction in delivering these cutting-edge security solutions. Whether for residential, commercial, or industrial applications, our products and systems are designed to meet the highest standards of security and surveillance needs.



Video Management Solutions

At Champion Security System, we specialize in Video Management Solutions that offer robust capabilities for managing multiple network cameras efficiently over LAN/WAN environments. Our Video Management Software (VMS) or Video Management System (VMS) is designed to provide scalability and flexibility, ensuring seamless integration with a wide range of IP cameras.

Key Features of our Video Management Solutions:

Compatibility: Our VMS supports virtually any IP camera, offering integration with a broad spectrum of makes and models, including those compliant with ONVIF standards. This ensures compatibility with diverse camera setups, providing flexibility for various surveillance deployments.

Scalability: Whether you require management for a few cameras or an extensive network spanning unlimited cameras, our VMS is scalable to accommodate your specific needs. This scalability allows for seamless expansion as your surveillance requirements grow.

Open Framework: We utilize an open framework of codecs and protocols within our VMS, enabling smooth integration with industry-standard cameras. This framework supports efficient video streaming, recording, and management, enhancing overall system performance and reliability.

Centralized Management: Our VMS provides centralized management of video feeds, allowing operators to monitor and control cameras from a single interface. This centralized approach enhances operational efficiency and situational awareness, simplifying the management of large-scale surveillance deployments.

Advanced Features: Beyond basic monitoring, our VMS incorporates advanced features such as video analytics, motion detection, facial recognition, and object tracking. These features enhance security effectiveness by providing proactive alerts and actionable insights based on real-time video data.

Remote Accessibility: With remote access capabilities, our VMS enables monitoring and management of video feeds from any location via mobile devices or computers. This feature supports flexible surveillance operations and timely response to security incidents.

Customization and Integration: We offer customization options and integration services to tailor our VMS to specific operational requirements and integrate with existing security systems. This ensures seamless functionality and compatibility with your organization's infrastructure.

At Champion Security System, we are committed to delivering cutting-edge Video Management Solutions that empower organizations to achieve enhanced security, efficiency, and scalability in their surveillance operations. Our comprehensive approach ensures that your video surveillance deployment meets the highest standards of performance and reliability.



Live and Alarm Monitoring and health Monitoring

At Champion Security System, we provide advanced Video Management Solutions that cater to your specific requirements for managing and monitoring multiple cameras effectively. Here's how our system addresses your needs:

1. Live View for Multiple Cameras:

Our Video Management System (VMS) supports viewing multiple cameras simultaneously on a single screen or across multiple screens using a video wall configuration. This capability allows for real-time monitoring of multiple locations from a centralized interface.

2. Flexible Live View Options:

You can switch between live views of cameras either directly from the cameras themselves using RTSP (Real-Time Streaming Protocol) and HTTP options, or from the VMS server. This flexibility ensures that operators can access and manage live feeds based on their preferences and operational needs.

3. Grouping and Organization:

Cameras can be grouped based on criteria such as city, state, area, user/group, department, or location. This grouping simplifies navigation and enhances operational efficiency by providing organized access to specific camera feeds.

4. View Sequencing with Customizable Time Intervals:

Our VMS supports view sequencing, allowing users to set customizable time intervals for automatic switching between camera views. This feature enhances monitoring capabilities by ensuring comprehensive coverage of multiple camera feeds.

5. Advanced Zoom Options:

Zoom functionality is available both during live viewing and on preview screens. This allows operators to zoom in on specific areas of interest within camera views for detailed inspection and analysis.

6. Event Previews and Reporting:

Previews of recorded events are accessible, enabling quick review and analysis of past incidents or activities captured by the cameras. Detailed reports, including graphical representations such as bar and line charts, can be generated to provide insights into camera activity and system performance over time.



Live and Alarm Monitoring and health Monitoring

7. Health Monitoring for Cameras:

Our VMS includes health monitoring capabilities for each camera within the organization. This feature monitors camera status, connectivity, and performance metrics, allowing for proactive maintenance and timely resolution of issues.

8. Customized Camera Views:

Camera views can be customized according to user preferences, group settings, departmental requirements, and geographical locations. This customization ensures that each user or group has access to relevant camera feeds tailored to their specific needs.

At Champion Security System, we are committed to providing state-of-the-art Video Management Solutions that enhance security operations through advanced features, flexibility, and ease of use. Our systems are designed to meet the demands of diverse surveillance environments, ensuring comprehensive monitoring and effective management of camera networks.





What Make us Unique

Champion Security System is dedicated to providing superior security solutions across Maharashtra, with a strong presence in Mumbai and extensive coverage throughout the state and pan India. Here are the key aspects that define our commitment and approach:

1. Extensive Coverage in Maharashtra:

We serve every corner of Mumbai and all major cities across Maharashtra, including Thane, Navi Mumbai, Palghar, Pune, Nasik, and beyond. Our expansive network ensures prompt and reliable service delivery wherever our clients are located.

2. Largest Team in Mumbai:

With a team of dedicated engineers and support staff exceeding 10 professionals, Champion Security System boasts the largest operational team in Mumbai. This ensures we have the resources and expertise to handle projects of any scale effectively.

3. Dedicated Support Across Major Cities:

In addition to Mumbai, our dedicated engineers are strategically stationed in key cities such as Thane, Navi Mumbai, Palghar, Pune, Nasik, and other major locations across Maharashtra and pan India. This localized support enables swift response times and personalized service for our clients.

4. Why Maharashtra Focus:

Maharashtra's rapid growth and development, particularly in manufacturing and IT zones like Navi Mumbai, Thane, Palghar, and Pune IT city, present significant opportunities for investment. We capitalize on these opportunities by offering advanced security solutions aligned with the state's evolving needs.

5. Commitment to Learning and Innovation:

Champion Security System embraces a learning attitude, continuously updating our knowledge and skills in new technologies. This commitment ensures that we provide our clients with the latest advancements and cutting-edge solutions in security and surveillance.

6. Pioneering Artificial Intelligence Solutions:

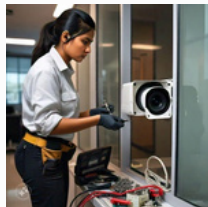
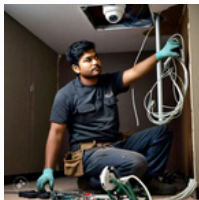
As a leading solution provider, we collaborate with consult-i-craft to integrate Artificial Intelligence (AI) into our security solutions. This partnership allows us to offer innovative AI-driven capabilities that enhance security effectiveness and operational efficiency.

7. Project Management Approach:

We adopt a structured project management approach for every implementation, ensuring clarity, efficiency, and adherence to timelines. This methodical approach guarantees successful project outcomes and customer satisfaction.

8. Emphasis on Communication and Documentation:

Communication is fundamental to our success. We prioritize strong documentation and clear communication channels throughout the project lifecycle. This ensures transparency, accountability, and alignment with our clients' expectations. Champion Security System is committed to delivering superior security solutions tailored to the unique needs of each client across Maharashtra and beyond. Our focus on innovation, expertise, and customer-centric service positions us as a trusted partner in safeguarding businesses and communities with cutting-edge technology and reliable support.





Authorized Channel Partner





Certificate

Certificate



Certificate of Registration

This is to certify that

CHAMPION SECURITY SYSTEM

HEAD OFF: 192/194, 1ST FLOOR, OPP. COTTON EXCHANGE,
KALBADEVI ROAD, MUMBAI-400002, MAHARASHTRA (INDIA)
BRANCH OFF: 6/338 S V ROAD, NEAR- ANDHERI SUBWAY, OPP. D C B
BANK, ANDHERI(W), MUMBAI-400058, MAHARASHTRA (INDIA)

has been assessed and Certified by Arcade Management Certification
as meeting the requirements of:

ISO 9001:2015

Quality Management System

For the following scope of activities:

CCTV SERVICES & NETWORKING SOLUTION

SALES & SERVICE PROVIDER OF SECURITY SURVEILLANCE SYSTEM,
BIOMETRIC MACHINE, DOOR LOCK, DOOR PHONE, FIRE ALARM,
INTERCOM, EPBAX AND PA SYSTEM AND SECURITY ALARM SYSTEM

Date Of Registration: 10/02/2025
1st Surveillance Due: 09/02/2026

2nd Surveillance Due: 09/02/2027
Recertification Due: 09/02/2028

CERTIFICATE No:- 250210Q105

To Verify this certificate please visit at www.arcadecert.co.uk



daniel payton
Authorised Signatory

Address: 106 Cunnery Rd, Manchester M60 6ZA, UK E-mail: info@arcadecert.co.uk

This certificate remains the property of Arcade management certification and shall be returned immediately on request. Validity of this certificate is subject to annual surveillance audits to be done successfully or on before due date of audit (Incase if surveillance audit is not conducted, this certificate shall be suspended/withdrawn)



प्रास्य आरजी - 2
Form RG - 2



भारत सरकार
Government of India
व्यापार चिन्ह रजिस्ट्री
Trade Marks Registry
व्यापार चिन्ह अधिनियम, 1999
Trade Marks Act, 1999



INTELLECTUAL
PROPERTY INDIA
Patents, Designs, Trademarks,
Geographical Indications

ब्रम्होक्त
No. 3149953

व्यापार चिन्ह के रजिस्ट्रीकरण का प्रमाणपत्र, धारा 23 (2), नियम 56 (1)
Certificate of Registration of Trade Mark, Section 23 (2), Rule 56 (1)

©2012 B&W Japan / Trade Mark No. 5290052

Exam Date 18/01/2022

CA 2068 /J, No. 2068

यह प्रमाणित किया जाता है कि निम्न प्रकार पदार्थ की सम्पत्ति इसके साथ संलग्न है, यह _____ द्वारा मेरे दिष्ट है। _____ द्वारा मेरे प्रतिनिधित्व में पुनः है।

Certified that Trade Mark / a representation is annexed hereto, has been registered in the name(s) of:-
RAJESH SHANTIDEVI TRADING AS CHAMPION SECURITY SYSTEM, 192/194, KALBADEVI ROAD, 1ST FLOOR, OPPOSITE COTTON EXCHANGE, MUMBAI - 400002. A PROPRIETORSHIP CONCERN. (Single Firm)

In Class	35	Under No.	5290052	as of the date	18 January 2022	in respect of
----------	----	-----------	---------	----------------	-----------------	---------------

RETAILING OF CCTV, COMPUTERS, SECURITY SYSTEMS, ACCESS CONTROL, VIDEO DOOR PHONE, NETWORK CAMERA, INTRUDER ALARM AND ACCESSORIES.

Trade Mark as annexed

मेरे जन्म पर आज के मास के वें दिन को इस पर मुद्रा लगायी गई
Sealed at my direction, this 20th day of January, 2023



Trade Marks Registry MUMBAI


Registrar General
Registry of Trademarks

†जिनटिकरण अवधि के अंतर्गत 1+ वर्ष के लिए है और जटिलताएँ वह 1+ वर्ष की आयु के लिए और आगे 1+ वर्ष की आयु के अंतर्गत 1+ वर्ष की आयु के लिए हैं।

Registration is for 10 years from the date of application and may then be renewed for a period of 10 years and also at the expiration of each period of 10 years.

we cannot tell whether it will be the in fact a different person and it will be

This certificate is not for use in legal proceedings or for obtaining Registration abroad

टिप्पणी - इस प्रकार चित्र के समक्ष में कोई परिवर्तन होने पर, या मापदंड के मुख्य अक्ष के प्रति ही या अक्षों में प्रतीक के लिए प्रति ही परिवर्तन होने पर परिवर्तन के लिए अनेक उदा. किए जा सकते हैं।

Note: Upon any change of ownership of this Trademark, or change in address, of the principal place of business or address for service in India a request should **AT ONCE** be made to register the change.



MRE®
Pioneering Power Supplies



CERTIFICATE OF DEALERSHIP

This is to certify that
CHAMPION SECURITY SYSTEM
is the authorised trained dealer for MRE.



Dhiraj Radhakrishnani
Director





OUR CLIENTS CORPORATE



HEMMO
PHARMACEUTICALS PVT. LTD.
WE UNDERSTAND PEPTIDES



LAXMI MOULDS

Think about your tires.

Narnolia™

Pharmaceuticals & Chemicals



CHEMIE
ALLIANCE

Uniconnect®
INTERNATIONAL SIM CARDS

G GROFERS



SHETH CREATORS

no error®



Since-1954



MERAKI FILMS



SUGAR



JOB-Networking Location-
Belapur,Kharghar



Mumbai Metro Rail
Corporation



एम एम आर डी ए
MMRDA



SNG & PARTNERS

Advocates & Solicitors

ESTD 1962



CACHET

PHARMACEUTICALS PVT. LTD.



ARISTO

PHARMACEUTICALS PVT. LTD.



KIA MOTORS



Govt. Project

- Municipal Corporation of Greater Mumbai (MCGM)
- The Mumbai Metropolitan Region Development Authority (MMRDA)
- Mumbai Metro Rail Corporation Ltd (MMRCL)
- Reserve Bank of India (RBI)

Corporate Project

- Aditya Birla Management Corporation P. Ltd All Over India (Total 68 Store)
Aditya Birla Fashion and Retail Ltd.(pantaloons)
- Vellvette Lifestyle Private Limited (Sugar Cosmetics) All Over India (Total 16 Store)
- Arm And Skill Contractors--- All Over Mumbai 15 Location Metro Line
- Allied Aviation Pvt.Ltd-- Andheri East
- Freyssinet Prestressed Concrete Company Ltd-- Western Express Highway
- Arms & Skill Infratech Private Limited--- Vicino Mall
- Ultra Marine Mazgaon--- Dock Ship
- Zoho Corporation Private Limited --Seepz, Andheri East
- Sea Delta Marine & Offshore Pvt.Ltd --Powai
- Madison Communications Pvt Ltd – Andheri East
- Kavish Automobiles Private Limited – Kia Motor Service Center ,Mumbai
- Cachet Pharmaceuticals Pvt. Ltd -- Worli
- Aristo Pharmaceuticals Pvt. Ltd -- Andheri West
- Hemmo Pharmaceuticals Pvt Ltd -- Turbhe
- Omci Shipmanagement Private Limited , Powai



Contact Us



Enquiry 8080808109

Sales 8080806288

Tel - +91-31476838

Address: 6/338 Andheri subway, OPP-DCB Bank,
Swami Vivekananda Rd, Andheri West, Mumbai,
Maharashtra 400058



info@championsecuritysystem.com



<https://championsecuritysystem.com>



<https://www.facebook.com/cssytem>

Get in Touch

<https://csscctvcamera.com/digitalcard/index.html>

Google Review





Champion Security System

We sincerely thank you for your cooperation and active participation. Your involvement played a crucial role in the success of this initiative, and we truly value your support and engagement.

